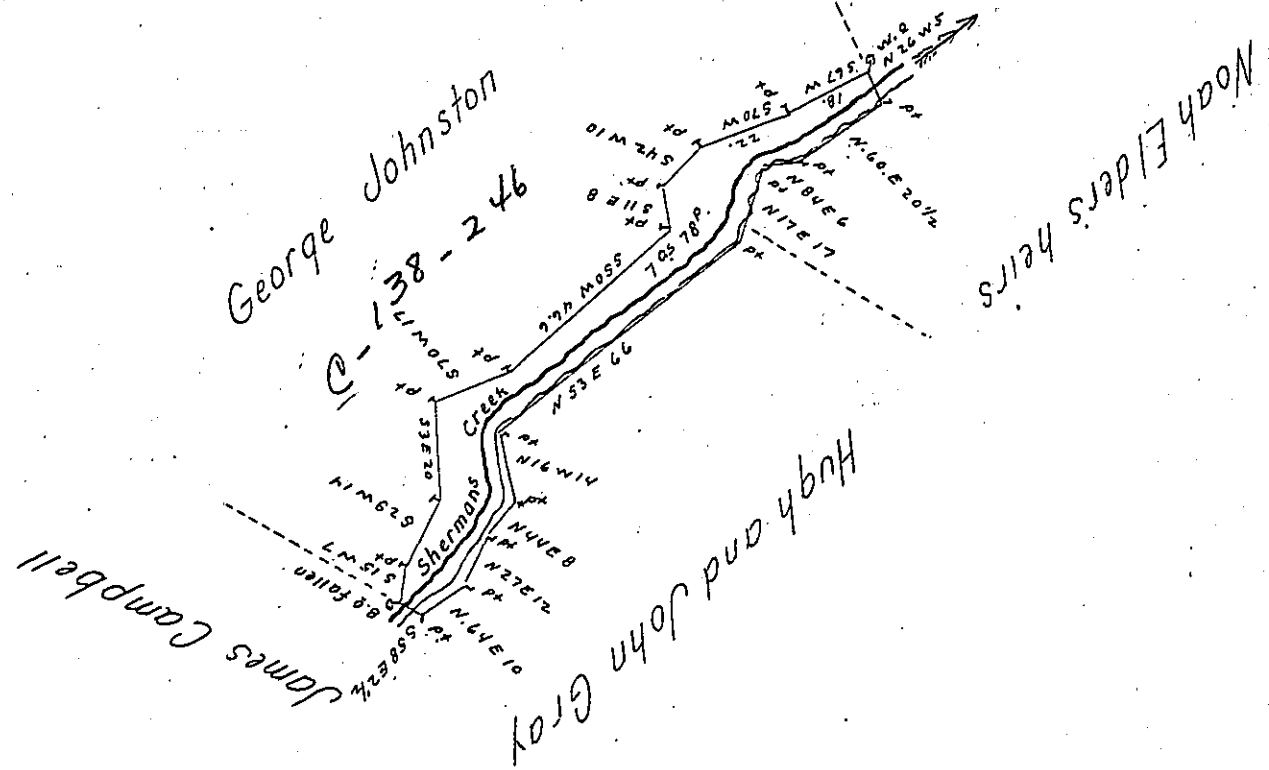


Courses and Distances

- S 67 W 18
- S 70 W 22
- S 42 W 10
- S 11 E 8
- S 50 W 46.6
- S 70 W 17
- S 3 E 20
- S 29 W 14
- S 15 W 7.8.0.
- S 58 E 2 1/2
- N 64 E 10
- N 27 E 12
- N 44 E 8
- N 16. W 14
- N 53 E 66
- N 17 E 17
- N. 84 E 6
- N 60 E 20 1/2
- N 26 W 5 W 8



Draft of a tract of land Situate in Toboyne Township Perry County
 Containing Seven Acres Seventy Eight perches & allowance of Six
 per Cent for roads &c. Surveyed April 23^d 1841 On a warrant
 granted to George Johnston dated June 20th 1840.

John Laporte Esq. } pr. W^m Wilson D.S.
 Surveyor General }

IN TESTIMONY that the above is a copy of the original remaining on file in
 the Department of Internal Affairs of Pennsylvania, made
 conformably to an Act of Assembly approved the 16th day of
 February, 1833, I have hereunto set my Hand and caused
 the Seal of said Department to be affixed at Harrisburg,
 this twenty seventh day of April 19 05.

David R. Brown
 Secretary of Internal Affairs.